

CALCUL Surfaces

SURFACES HABITABLES au 1.07.1972

30.1 m²
 66.8 m²

96.9 m² + 60% (58.14 m²)=155.04

AGRANDISSEMENT 1980

17.9 =

58.14 m² - 17.9 = 40.24 m²

SUPPRESSION Chambre NORD

11.9 m²

TRANSFORMATIONS INTERIEURES POSSIBLES

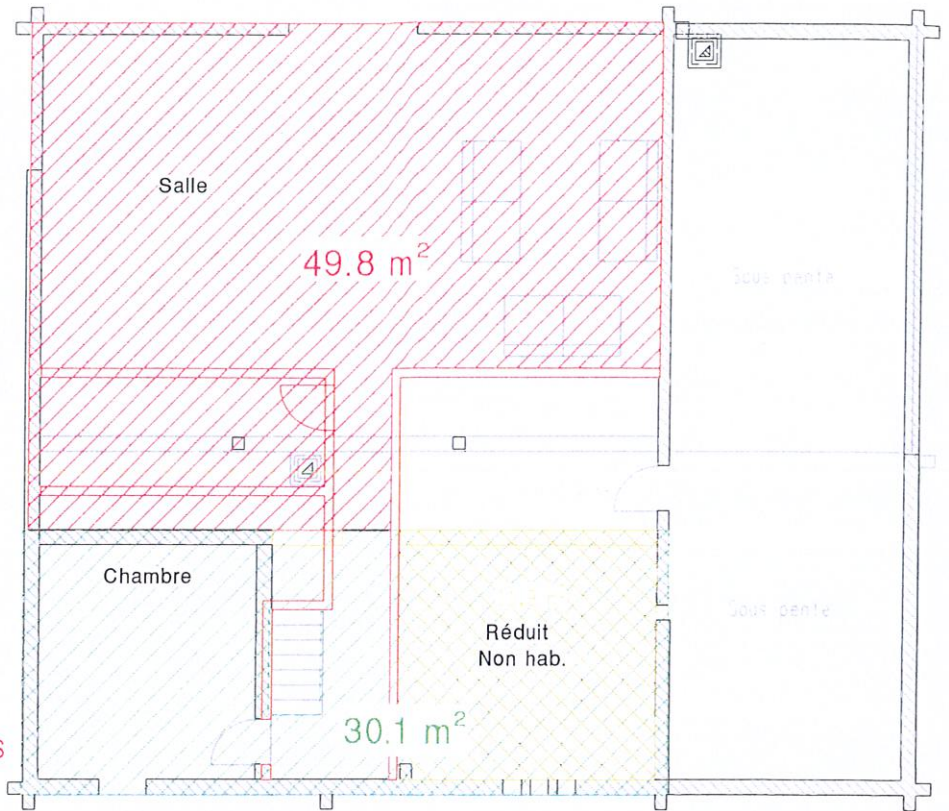
40.24 + 11.9 = 52.14 m²

TRANSFORMATIONS INTERIEURES PROJETEES

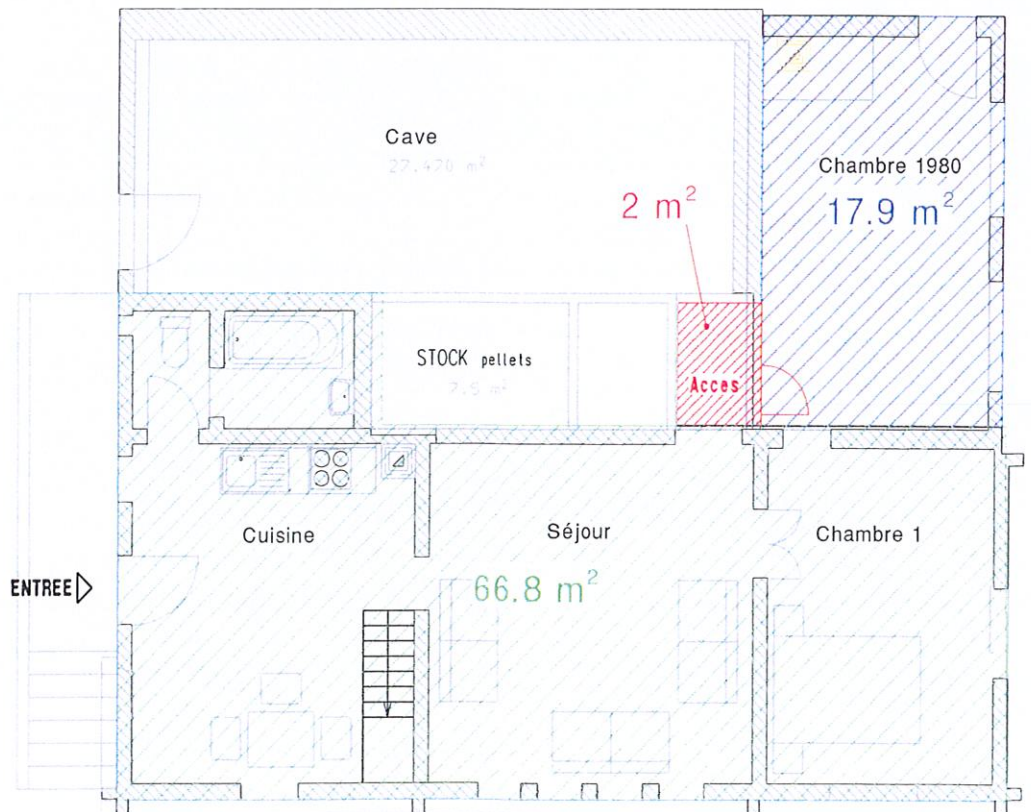
Etage 50 m²

Rez 2 m²

Surf. = 52 m²



ETAGE



REZ DE CHAUSSEE